

MOR12

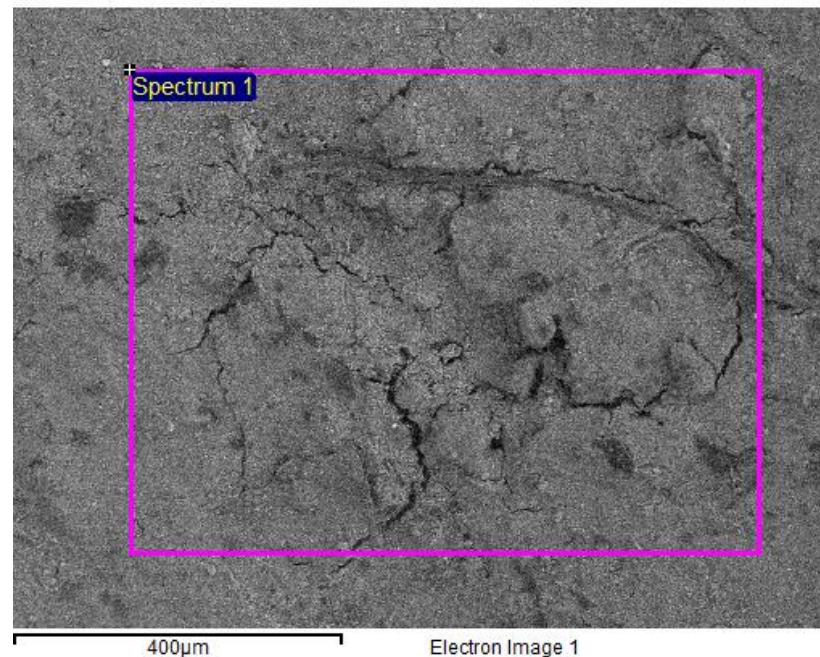


MOR12.1 2 measurements on two residues

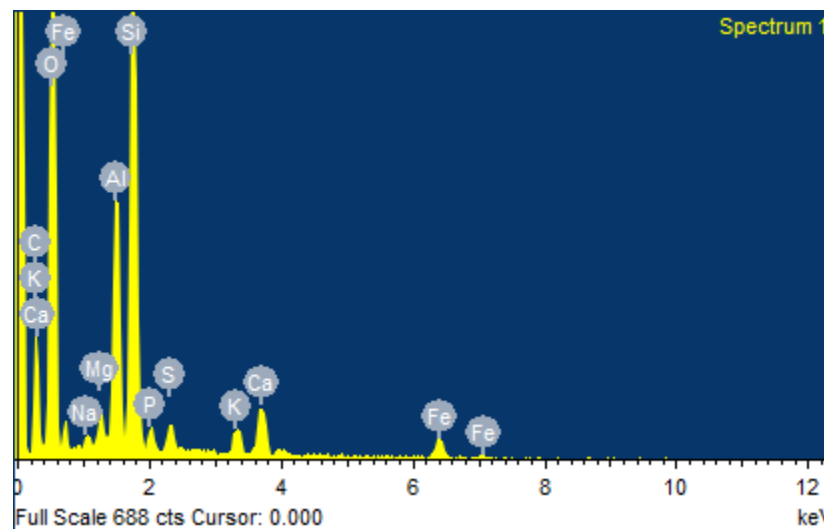
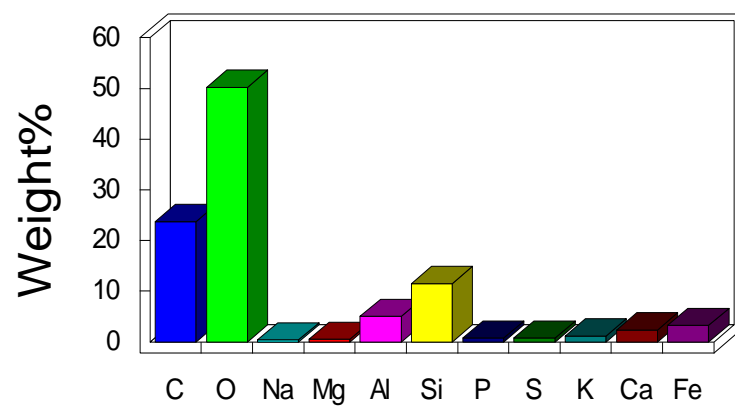
Sample: MOR12

Type: Default

Element	Weight%	Atomic%	
C K	23.76	33.21	
O K	50.25	52.73	
Na K	0.41	0.30	
Mg K	0.53	0.36	
Al K	5.10	3.18	
Si K	11.52	6.89	
P K	0.76	0.41	
S K	0.80	0.42	
K K	1.21	0.52	
Ca K	2.40	1.00	
Fe K	3.27	0.98	
Totals	100.00		

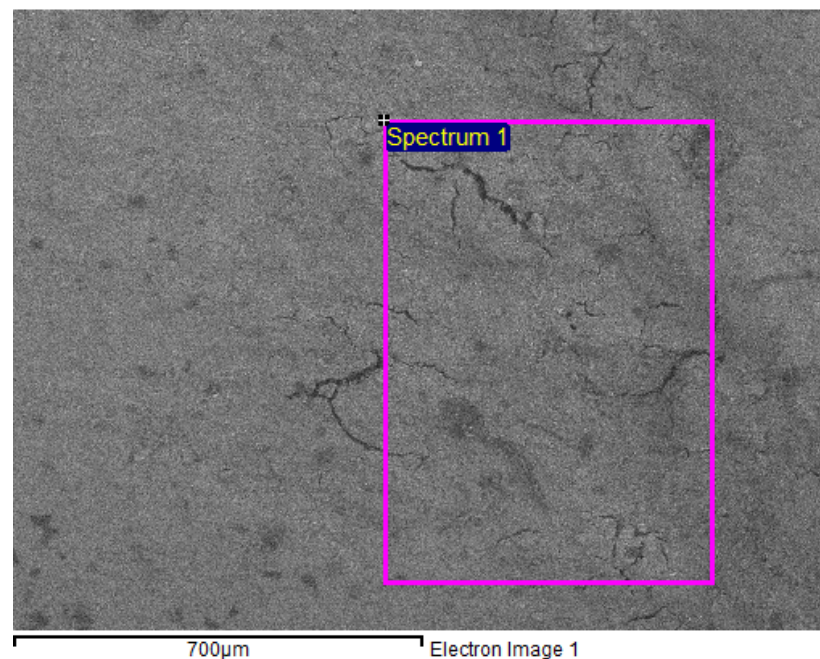


Quantitative results



Sample: MOR12

Element	Weight%	Atomic%	
C K	24.62	34.42	
O K	49.00	51.44	
Mg K	0.63	0.43	
Al K	5.39	3.35	
Si K	11.42	6.83	
P K	0.74	0.40	
S K	0.74	0.39	
K K	1.25	0.54	
Ca K	2.86	1.20	
Fe K	3.35	1.01	
Totals	100.00		



700µm

Electron Image 1

Quantitative results

