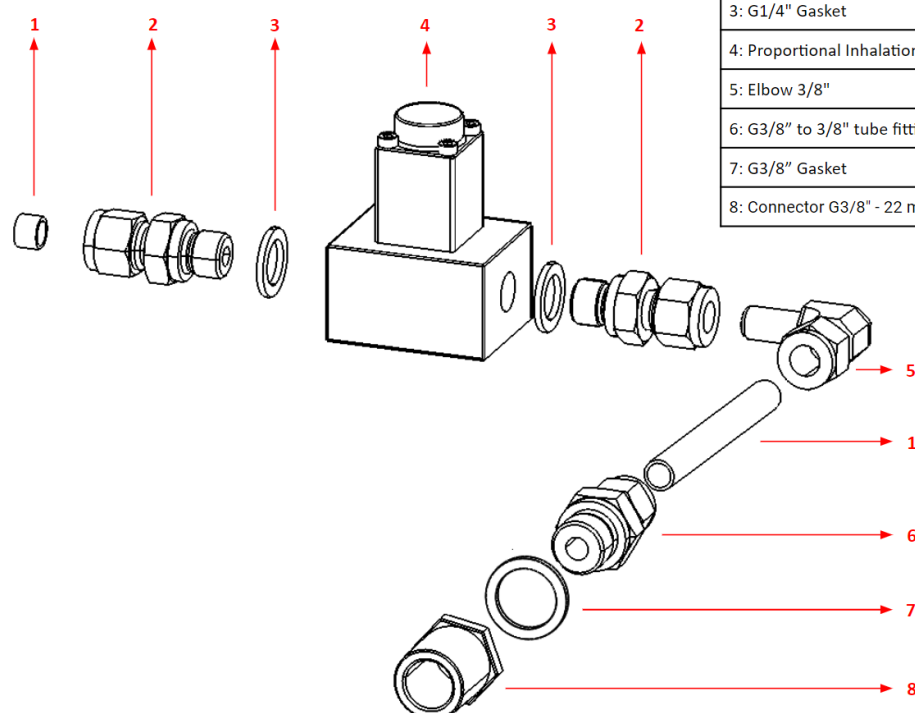


	Work Instruction:
	Release Date 27-04-2020
	Rev Work Instruction V1.3
	Page
TITLE: SUB-ASSEMBLY #4A – Inspiratory track (Mixing chamber to 3D block)	

Revision	Date	Modifications	Author
V1.0	08-04-2020	Setup First Version	Guusje Jans
V1.1	13-04-2020	Images and elaboration	Jeroen Roest/ Bart Spel
V1.2	16-04-20	Materials overview	Jeroen Roest/ Bart Spel
V1.3	27-04-20	Translation from Dutch to English	Karin Olthof

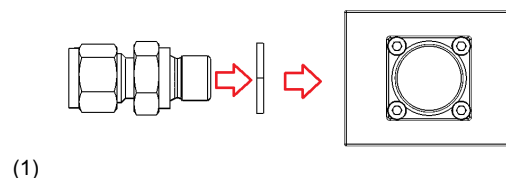
This subassembly describes the assembly of the mixing chamber and the inspiratory 3D-complex. This assembly together with subassembly 4B forms the inspiratory part. The Swagelok components that are used in every step are named explicitly to ensure correct component placement.



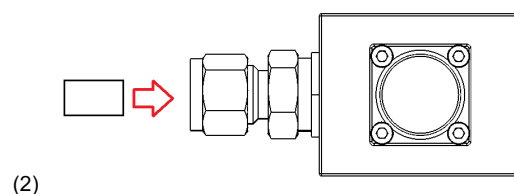
Part	Supplier	Quantity
1: 3/8" tube	Swagelok	n/a
2: G1/4" to 3/8" tube fitting	Swagelok	2
3: G1/4" Gasket	Swagelok	2
4: Proportional Inhalation Valve	Pressure Control Solutions	1
5: Elbow 3/8"	Swagelok	1
6: G3/8" to 3/8" tube fitting	Swagelok	1
7: G3/8" Gasket	Swagelok	1
8: Connector G3/8" - 22 mm	Heemskerk	1

	Work Instruction:	
	Release Date	27-04-2020
	Rev Work Instruction	V1.3
	Page	
<b>TITLE: SUB-ASSEMBLY #4A – Inspiratory track (Mixing chamber to 3D block)</b>		

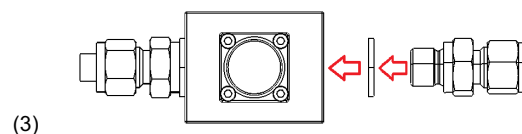
1.
  - On the side of the proportional inhalation valve, which is connected to the mixing chamber (receiving flow side, also annotated on the valve), a G1/4" to 3/8" tube fitting should be placed (see figure 1)
  - In between these parts, a rubber ring (G1/4" Gasket) should be placed
    - G1/4" to 3/8": SS-600-1-4-RS.1
    - G1/4" Gasket: SS-4-RS-2V.



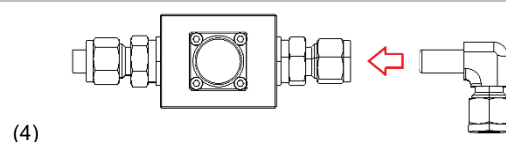
2.
  - Attach a 3/8" tube fitting (length  $\pm$  4 cm) to the tube fitting of step 1 (see figure 2).



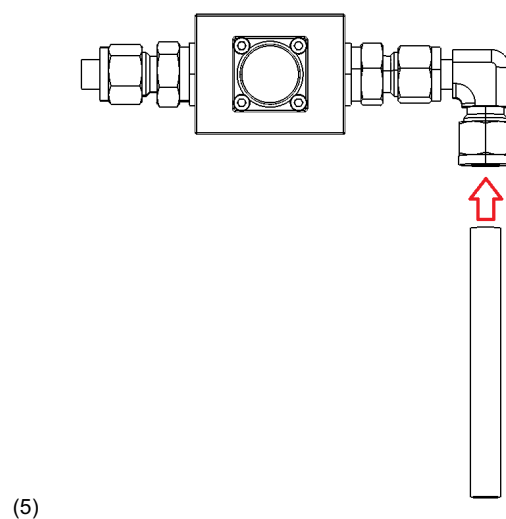
3.
  - On the other side of the proportional inhalation valve, leading to the remainder of the inspiratory part, attach a G1/4" to 3/8" tube fitting (see figure 3).
  - In between these parts, a rubber ring (G1/4" Gasket) should be placed
    - G1/4" to 3/8" tube fitting: SS-600-1-4-RS.
    - G1/4" Gasket: SS-4-RS-2V.



4.
  - An elbow 3/8" should be placed in between (see figure 4).
  - Elbow 3/8": SS-600-2R6.



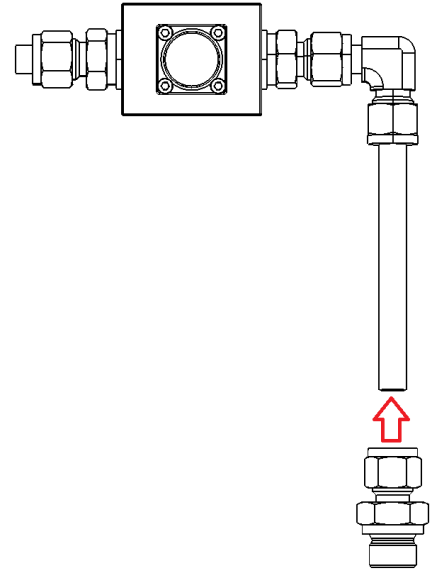
5.
  - Attach the 3/8" tube (length  $\pm$  12.4 cm) to the elbow described in step 4 (see figure 5).



	Work Instruction:	
	Release Date	27-04-2020
	Rev Work Instruction	V1.3
	Page	
TITLE: SUB-ASSEMBLY #4A – Inspiratory track (Mixing chamber to 3D block)		

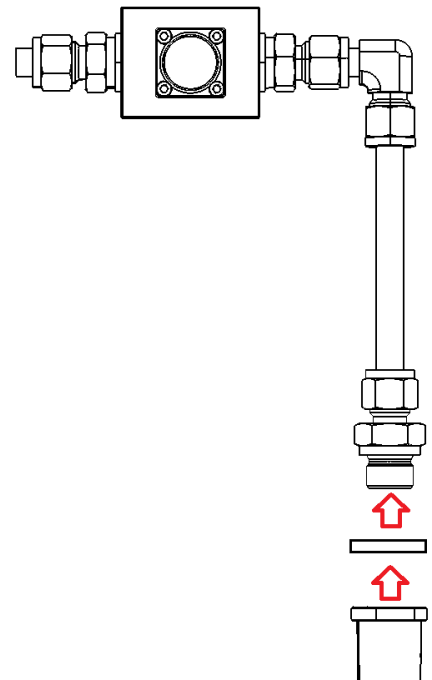
- 6.
- A G3/8" to 3/8" tube fitting should be attached to the tube described in step 5 (see figure 6).
    - G3/8" to 3/8: SS-600-1-6RS.

(6)



- 7.
- A connector G3/8" - 22 mm should be attached to the tube fitting described in step 6. This is not a Swagelok part, but a custom made part (see figure 7).
  - A rubber ring (G3/8" Gasket) should be placed in between.

(7)



	Work Instruction:	
	Release Date	27-04-2020
	Rev Work Instruction	V1.3
	Page	
TITLE: SUB-ASSEMBLY #4A – Inspiratory track (Mixing chamber to 3D block)		

When the assembly is executed correctly, the result will be similar to the images below.

